

## PE0602

### Evaluation Kit for the CMX736x

The PE0602-736x Platform Evaluation Kit is designed to assist in the evaluation and application development of the CMX736x range of *FirmASIC™* products.

#### Features

- On-board access to all CMX736x Signals, Commands and Data
- CMX736x *FirmASIC* Product Range Evaluation
- Serial Flash Option for Function Image with In-circuit Programming
- On-board Supply Regulators Operate from a Single 6-Volt Supply
- Instrumentation Interface to Differential I and Q Signals
- Command and Control by PC via the PE0003 Universal Interface Card or User's  $\mu$ C Development Application or Emulator
- 19.2MHz Oscillator, User Xtal or External Clock Input to CMX736x

#### Supply Requirement

- +/-6 V

*For further information, please refer to the 'Design Resources' section on the CMX736x *FirmASIC™* product pages at [cmlmicro.com](http://cmlmicro.com)*

The kit is in the form of a populated PCB comprising a CMX736x target IC and appropriate supporting components and circuitry.

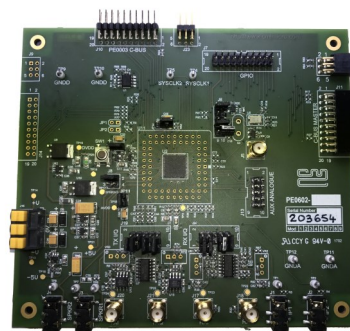
The board also incorporates all of the necessary power-supply regulation facilities for operation from a single 6 volt supply, or a dual +/-6 volt supply if the instrumentation interface is required.

The board is fitted with a C-BUS connector allowing the operation via connection to either of the two C-BUS ports on a CML PE0003 Universal Interface Card, and used with the associated PC GUI software, or by direct connection between the CMX736x C-BUS and the user's  $\mu$ C development application or emulation system.

The CMX736x Function Image (FI) can be loaded, on power-up, directly into the on-board target IC using the PE0003 interface or the user's system. Alternatively, it can be automatically loaded from the on-board serial memory, on power-up.

In this case, the on-board serial memory has to be pre-loaded with the FI by using the 'Program Serial Memory' tab on the PE0003 GUI software, or by the user's system utilising the appropriate 'thick stub' programme. All of this software is available from the CML website.

Function images suitable for the CMX736x range of products can be downloaded from the CML Technical Portal.



PE0602



Click here to view the online

**PRODUCT  
DATA RESOURCE**

## WHAT TO DO NEXT

Visit: [www.cmlmicro.com](http://www.cmlmicro.com)

Find: [Distributor](#)

## CML Microcircuits Benefits

### Faster time to market

Developing proven high performance and field tested ASSP ICs, CML is helping engineers to cope with increasing pressure in delivering shorter project design cycles.

### Design flexibility

CML's *FirmASIC*® reconfigurable technology with the use of a Function Image upload enables a single hardware platform to be used for multiple communications systems.

### High Quality

With 100% of products being tested before shipping, customers are assured of the highest reliability.

### Product Longevity

Designing with CML products, manufacturers are rewarded with longer product life cycles and a stable BOM, ensuring minimum engineering costs and maximum profit.

### Low Power

Being at the forefront of low power chip technology, manufacturers can develop smaller equipment with extended battery life.

### Superior Support

Internal and field based applications teams worldwide provide focused customer support to ease the development process.

[www.cmlmicro.com](http://www.cmlmicro.com)

United Kingdom  
United States  
Singapore

Tel: +44 (0) 1621 875500  
Tel: +1 336 744 5050  
Tel: +65 62888129

email: [sales@cmlmicro.com](mailto:sales@cmlmicro.com)  
email: [us.sales@cmlmicro.com](mailto:us.sales@cmlmicro.com)  
email: [sg.sales@cmlmicro.com](mailto:sg.sales@cmlmicro.com)